

RESURRECTION PARISH

February 5, 2017

5th Sunday in Ordinary Time

MAIN PHONE NUMBER (302) 368-0146
Outreach Requests Option 5
FAX Automatic

Rev. William Graney, Pastor	x102
Rev. Greg Corrigan, Assoc. Pastor	x115
Secretary (Main Office)	x 0
John Falkowski, Deacon	x110
Nancy Maloney, Christian Formation	x104
Ruth Sanders, Liturgy/Music	x106
Sandy Landoll, Social Concerns Coord.	x103
John Werner, Business Director	x105
Elaine Little, Youth Ministry	x107

Parish Office Hours
9:00am - 2:30 p.m. Monday-Friday
6:30 - 8:30 p.m. Monday-Thursday

PASTORAL COUNCIL

Mike Rzucidlo	Executive Officer
Sharon Gidumal	Assist E.O.
Joanne Hedrick	Secretary
Maritza Poza-Grise	Trustee
Chip Schussler	Trustee

3000 Videre Drive
Wilmington, De. 19808

<http://www.resurrectionde.org>

BULLETIN DEADLINE: Wednesday
10 days prior

SPIRITUALITY OUTREACH STEWARDSHIP

Resurrection Parish is a welcoming Roman Catholic Community founded on the renewed vision of Vatican II. Dedicated to the ongoing formation of all parishioners, we seek a deeper spirituality by encountering God in liturgy, prayer, scripture, service and in each other. We make a fuller commitment to outreach by seeking to understand and to address the emotional, physical and spiritual needs of our parish community and beyond our borders. For the evangelization of our community and our stewardship of God's kingdom we will joyfully share our time, talent and treasure making the gospel call to ministry our way of life.



THE LORD'S DAY
Saturday Vigil 5:30 PM
Sunday 8:15 and 10:30 AM
and 5:30 PM

WEEKDAY MASS
Mon., Wed., Thu., Fri. 8:30 AM
Tuesday 7:00 PM

SACRAMENT OF RECONCILIATION
Tues. 6:30 PM
Sat. 4:45 PM

RCIA

For information on the process for adults being fully initiated into the Catholic Church, please call the Pastor.

SACRAMENT OF MARRIAGE
One year preparation period is required.

PASTORAL CARE OF THE SICK
For hospital and home visits, please call the office for arrangements.

SACRAMENT OF BAPTISM
Before the birth of your child, please call the Christian Formation Office about the preparation process.

Growing up on Long Island, NY, it seemed being Catholic was not as prevalent as some other religions. I was very fortunate that we could walk to our local church, a lot of my friends had to drive to their houses of worship. My grandmother was pinnacle in helping me form my faith. As a young adult, I had questions and attended different churches. The way I felt in the Catholic community always brought me back. I knew I had to find the right church though. I started attending Resurrection about 8 years ago and it finally felt right. I knew I wanted to do my best to raise my children with a strong foundation for their faith. My oldest daughter, Brooke, took to it right away. Getting involved with middle school youth group led her to four summer service trips. By her third one, she really wanted me to go and have the experience with her. This is definitely our Spiritual Work of Mercy. This led Brooke to be a recipient of the St. Timothy award. I felt even more connected to God after my first trip. Sharing in those moments with her will be cherished forever. Now my second

daughter, Bria, is getting involved and we look forward to her first summer

service trip this summer. I have no doubt this trip will also have those special moments that I will add to my cherished list.

I started teaching 2nd grade CFP classes and then moved to the reconciliation and first communion classes at night. Being a teacher by day, it came very natural to me. I love to watch the wonder in their eyes as they learn about Jesus. There is not one saint or piece of scripture I could say that led me to my faith to be honest. It honestly is my 2 daughters, my pride and joy, my reasons for waking up every morning! They are the reason. I truly feel so blessed God chose me as their mom. I want to continue leading by example and showing them the way. I also know, that when I falter, they are always there!

Kim Snyder

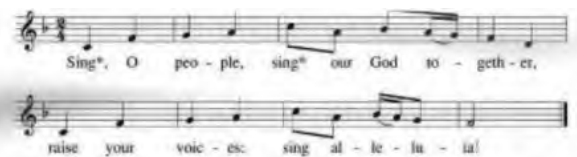
Sean McCormick, Janice Kane, Ralph Culver, Cass Thomas, Kyle Rzucidlo, Mike Pohlen, Carol Strasser, and others mentioned in our parish book of intentions.

LITURGY



Doxology and Amen: Doxology” comes from a Greek word meaning “words of praise.” The Eucharistic Prayer ends with a doxology addressed to the triune God: “Through him, and with him, and in him, O God, almighty Father, in the unity of the Holy Spirit, all glory and honor is yours, for ever and ever.” It is an exclamation of praise, honor, and glory to God, reminding us that we receive everything from God through the Son, in the power of the Spirit. At the consecration, the priest held up the host and then the chalice for us to see and adore. During the doxology, the host and chalice are held up again, but this time they are held up and offered to God the Father. With the doxology, the Eucharistic Prayer ends, as it began, with words of praise addressed to the Father: truly, it is right and just to give God praise, and we assent to this in our whole-hearted acclamation, “Amen.” Never was more meaning packed into so short a word. This “Amen,” sometimes and fittingly called “the great Amen,” is our response to the entire Eucharistic Prayer.

Corinna Laughlin, Copyright © J. S. Paluch Co.



Musicians Meeting!

WHO: All people interested in music ministry at Resurrection Parish -- those newly interested, as well as those already serving!

WHAT: Lots of singing and playing, some informational chatting and some socializing!

WHEN: Thursday, February 16 at 7:00-8:30 pm

WHERE: Resurrection Parish

We'd love to know if you are planning to be there. Please contact Ruth Sanders, rsanders@resurrectionde.org , 302-368-0146 Ext. 106.



Bria, Kim, and Brooke Snyder

INTENTIONS

Monday	Feb. 6	8:30 am	+Robert Mudrock
Tuesday	Feb. 7	7:00 pm	
Wednesday	Feb. 8	8:30 am	
Friday	Feb. 10	8:30 am	
Saturday	Feb. 11	5:30 pm	Parish community
Sunday	Feb. 12	8:15 am	+Constance Jones Chesley
		10:30 am	+Shirley Ciarlo
		5:30 pm	+Edward Kennedy

Parish **cancels daily Mass** on Thursdays. We recommend attending a church closest to you.



God is the source of all healing and hope, to whom we lift up in prayer the needs of the sick and those who care for them. Pray for all the needs in our Book of Intentions and for those in our

Parish Family who are sick: *Lord, allow your healing hand to assist*

John Wisniewski, JD Howell, Jack & Jane Tabaka, Joseph Hemphill, Renee Roder, Alyssa Stover, Chet Andruskiewicz, Jim Gambort, Maryann Ciabattoni, Ben Stam, Helen Meys, Candi Smith, Kat Edwards,

Cross Bearers Needed: We would love to have our Cross lead our gathering and sending processions, but at times do not have anyone to carry it. Though not time consuming or very demanding, carrying the cross can be a powerful sign of offering our lives to Christ. Might this be something you are able to do? Please contact Ruth Sanders, rsanders@resurrectionde.org, 302-368-0146 Ext 106.

SNAP Support Group: A support group for survivors of clergy sexual abuse and their families sponsored by Survivors Network of those Abused by Priests (SNAP) meets in Wilmington on the second Tuesday of each month from 7:00-8:30pm. For the location, call Judy Miller at 302-234-1519 or email: snapdelaware@yahoo.com. We hope that you will join us for this informal and confidential meeting.

PARISH LIFE

Let us Pray

Immortal Friend,
Imperfect is a gift
Which no animal or angel was given.
Let us rejoice in it, then, that along
Among all creatures I am always capable of more.
Amen
From Daily Prayers by Fr. William J O'Malley

Next week, we will take up the Catholic Home Missions Appeal. Right now, over 40 percent of dioceses in the US are considered home missions because they are unable to fund essential pastoral work needed in their communities. Your support of this appeal helps ease the struggle of these dioceses. Please prayerfully consider how you can support this appeal. More information can be found at www.usccb.org/home-missions.

Next week, our parish will take up the 131st annual National Black and Indian Mission Collection. Our support of this collection helps build the Church in African American, Native American, and Alaska Native communities from coast to coast. Schools, parish religious education programs, and diocesan ministries depend on your generosity to help them spread the Gospel of Jesus Christ!

Shawl Ministry: Next meeting of Prayer Shawl group will be Monday February 13 from 12:30 to 2. Come help us make shawls. Our shawls are made in prayer and bring comfort to those in need.

ELEMENTARY CHRISTIAN FORMATION



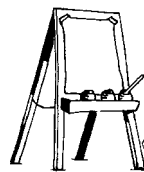
Welcome!

K-5 Christian Formation Program (CFP) meet from 9:15-10:15. Drop off begins at 9:10. See you there! 1/22, 29.

Would you like more information about Christian Formation for Children (Religious Education or Sacramental Preparation)? Contact Nancy at 302-368-0146 ext. 104 or at nmaloney@resurrectionde.org.

Share your bread...Shelter the homeless...Clothe the naked." (Isaiah 58:7) Although this scripture is usually meant to urge people to go beyond their own families, if you are in the active parenting stage of life, it may be enough to feed, shelter, and clothe your own family. If you're stretched pretty thin this week, you're allowed to count that. It's holy.

CFP: YOUTH MINISTRY



February Mini-Retreat for all middle and high school students

Saturday Feb 11, 2017- 10:00 AM-2:30 PM

Guest presenter Mr. Brian Magargal, parent and art teacher at Salesianum School. Come nourish your creative side! Please RSVP to Elaine (elittle@resurrectionde.org), so she has supplies for everyone.



Middle School and High School Youth Group:
Sunday, March 5, 2017 from 6:30-8:15

TAKING IT HOME

We are the salt of the earth and the light of the world. We are meant to help preserve the faith and bring flavor to the world and we are meant to be the light that keeps the unknowing and frightful darkness at bay. In essence, we are to be ourselves. The scriptures suppose that every human being is created with an unrepeatable, deep, interior shape. Rather than having to fight to do our will, we need to allow the Spirit of God to find a home within the space that is us. This Spirit does not invade us; it is the essence of loving, of respect, of forgiveness. It is God. We are built to be at one with this presence. Becoming ourselves means becoming what we were built to be: a home for the Spirit of Jesus and of God. God's love becomes us. It will help us find ourselves as what we really are deep down; salt and light. So in sum give taste and give light to the world.

We are God's creation, which means that we each have the capacity to bring zest and meaning to life and to light up this world so that it can be the place that God intends it to be. But this means that if we as salt and light are to do our work, we must complement what already is. It is not ourselves acting alone, but together acting with and complementing the work of the Creator, who are to enhance the work, which the Creator has already begun. As salt and light we are to help reveal the glory of God at work on earth because this is what God is committed to doing and what God has already done in us. In this world God has already begun the good work and as the salt of the earth and the light of the world we are meant to carry this good work forward so that the kingdom and the will of God will be done, "on earth as it is done in heaven."

Deacon John

SOCIAL CONCERNS

FAMILY PROMISE: Resurrection will be teaming up with Ebenezer UMC for our next hosting week, running from February 26 thru March 4 at Ebenezer. We will be ministering to up to 14 homeless individuals (children, men, and women) each day. We are in need of volunteers to be overnight hosts, van drivers to/from the Family Promise Center to Ebenezer each day, plus we will be helping to provide dinners and to-go items for breakfast and lunch for the week. Contact Deb Buckels, phone 239-2275 or dbuckels@verizon.net for more information or to help those in need.

The Making Of A Midwife: 33 New Students Begin Their Journey



Classes began this week for our 9th class of skilled birth attendants! This beautiful group (pictured below) will spend the next 12 months completing their didactic and clinical requirements to fulfill World Health Organization standards and essential obstetric skills. This training is free to our students.

All have a profound commitment to improve maternal and infant health and to serve their Haitian sisters with quality, respectful care.



Resurrection Parish supports *Midwives for Haiti* through our Charitable Giving Committee. Learn more at <https://midwivesforhaiti.org/best-of-2016/>



Day of Reflection, Carnival and Springtime Prophets, Jesus House Prayer and Renewal Center

Tuesday, Feb 28, 9:30 am - 3:30 pm, With Retreat Leader, Mary-Louise Chelsey-Cora we will acknowledge the dark and messy parts of life and begin to recognize the vulnerable beauty of our humanness. Cost is \$40 which includes lunch. Please visit our website (jesushousecenter.org) to register or call 302-995-6858.



**6TH SUNDAY IN ORDINARY TIME
GOSPEL – MATTHEW 5:17-37**

Jesus said to his disciples: “I tell you, unless your righteousness surpasses that of the scribes and Pharisees, you will not enter the kingdom of heaven. “You have heard that it was said to your ancestors, You shall not kill; and whoever kills will be liable to judgment. But I say to you, whoever is angry with brother will be liable to judgment. “You have heard that it was said, You shall not commit adultery. But I say to you, everyone who looks at a woman with lust has already committed adultery with her in his heart. “Again you have heard that it was said to your ancestors, Do not take a false oath, but make good to the Lord all that you vow. But I say to you, do not swear at all. Let your ‘Yes’ mean ‘Yes,’ and your ‘No’ mean ‘No.’ Anything more is from the evil one.”

Gospel Reflection

The First Reading, Psalm and Gospel for this day all relate to the way in which we are called to live in right relationship with God and with one another. What is referred to as the “Law” is generally used as shorthand for the Torah—the first five books of the Bible—which first of all establishes the history of relationship between God and humanity through the books of Genesis and Exodus and then provides detailed instructions about how that relationship should be honored and observed. When Jesus speaks about the Law and the Prophets, he is deliberately including the extensive collection of prophetic writings that interpret the Law in terms of justice and right relationships with others as being a reflection of the right relationship with God.

By declaring that he has come not to abolish the Law and the Prophets, but to complete—or fulfill—them, Jesus is making it perfectly clear that his ministry and teaching is in alignment with and in accordance with the historical tradition and he is not setting out to overthrow the Jewish tradition. Rather, throughout his ministry, Jesus repeatedly calls the people to be true to the teachings of old and to live them with integrity and dedication. His constant complaint is against those who live by the letter of the Law and ignore what we would call the spirit or intention of the Law. This is the root of his swipe at the shallow virtue of the scribes and Pharisees in today’s gospel. The criticism that Jesus leveled at these two groups was that their adherence to the Law made no room for the compassionate heart that the writings of the Prophets demanded.

But I now say to you: There is a distinct pattern to the teaching examples Jesus provides: “You have heard it said ...”; “but I now say to you...”. This was a common method of teaching in Jesus’ day and is often used as an example to suggest that Jesus was regarded as a Rabbi in his day. It is a typical rabbinical method of interpreting scripture, common in Jesus’ time. The rabbi quotes the teaching (you have heard it said...) and then offers an interpretation or reinterpretation of that teaching (but I now say to you).

Teaching examples: Jesus cites several examples of the Law to demonstrate the way in which he has come to fulfill those teachings, rather than to abolish them. He reinterprets the teachings on killing, adultery, divorce, and oath-breaking. When there is an attitude of observing the very literal meaning of law, there is a tendency to look for loopholes wherever possible. This attitude had become the norm in Jesus’ day. His reinterpretations are designed to challenge people to think about the law in a broader context and to take the law into their heart rather than looking for ways to get around it.

Interpretation: Jesus demonstrates the crucial nature of interpretation. It is easy for us today to look at something like the Ten Commandments or the Beatitudes and dismiss them as irrelevant. Taken literally, they have fairly limited application to our modern lives. However, interpreted in a broader context and within the context of our own lives, such ancient codes of behavior can take on new significance. Jesus points us towards the importance of looking beyond the surface and searching out the truth of such statements. Interpretation of scripture for our modern lives and modern world is vital to living life to the fullest.

- Q. Why does Jesus speak about not only keeping commandments but also teaching others to keep them?*
- Q. How do you feel about the interpretations of the Law that Jesus cites as examples?*
- Q. When has a particular interpretation of scripture helped you with a difficult literal passage?*
- Q. Where in your life are you called to be someone who fulfills or completes the Law and the Prophets?*

The English translation of the Gospel Verses from the Lectionary for Mass © 1997, 1981, 1968, International Committee on English in the Liturgy, Inc. All rights reserved. Lectionary for Mass, Copyright © 1998, 1997, 1970 Confraternity of Christian Doctrine; All rights reserved. Reflection, questions and alternative view points © Greg Sunter. © Creative Communications 2008. Used with permission. Art: © Jenny Close.

DOHERTY
FUNERAL HOMES
 WILMINGTON PIKE CREEK
 652-6811 999-8277
 www.dohertyfh.com

MEALEY FUNERAL HOMES
 info@mealeyfuneralhomes.com
 703 North Broom Street
 Wilmington, Delaware 19805
 302.652.5913
 Toll Free: 800.608.3533
 www.mealeyfuneralhomes.com

302-998-2257
Hentkowsky, Inc.
 "Your Key To Comfort"
 Heating, Air Conditioning & Electrical
 Sewer Service Carrier
 Turn to the experts
 www.hentkowsky.com


BLUE HEN CAR WASH
 1008 Capitol Trail
 Newark, DE 19711
 (Rt. 2 Between Possum Park & Polly Drummond)
BlueHenCarWash.com
302.273.2100

Family Owned and Operated Since 1987
 FREE INSPECTION Licensed & Insured

RIGHTWAY WATERPROOFING CO.
 BASEMENT WATERPROOFING
 MOLD REMEDIATION
 FOUNDATION REPAIR
 Church Member Discounts
215-427-1727
 www.RightwayWaterproofing.com

catholicmatch[®]
 Delaware
 CatholicMatch.com/dateDE

JOHN WASNIEWSKI III, DMD
 General & Family Dentistry
 Shoppes at Louviers
 103 Louviers Dr
 Newark, DE 19711
 Phone: (302) 266-0222 Text: (302) 528-6509


ANTHONY'S COAL FIRED PIZZA
 PIZZA WELL DONE
 Brian Henry, General Manager
 4803-4805 Limestone Rd.
 Pike Creek, DE 19808
302.635.7013
 pikecreek@acfp.com
 www.acfp.com


DC Funding
 Commercial Rates are at an **All Time Low**. Contact us today to get a free analysis to see if we can help **Save you money** with your monthly payments on your commercial property. Multi-Family, Retail, Office Building, Apartment and Condos. Can close in as little as 45 days! Four season customer service is our top priority.
 Call us today **215-586-1575** or **267-251-0341**
www.duqfunding.com
 3900 City Avenue, Suite 107 • Philadelphia, PA 19131


 Wedding Invitations & Holiday Cards
 Log Onto
www.jpcc.net
 conveniently from your home or office.
 ONLINE CATALOG • ONLINE ORDERING • ONLINE PROOFING
 All Major Credit Cards Accepted
 FREE UPS GROUND SHIPPING!


Victor L. Gregory, Jr., DMD MAGD
 Family & Cosmetic Dentistry
 5301 Limestone Road
 Suite 211
 Wilmington, DE 19808
302-239-1827
 www.victorgregorydmd.com


 Make a Difference in Your Community
VOLUNTEER
 with the American Red Cross
 Join today at redcross.org/Volunteer

SHOP LOCAL
 Patronize the Advertisers who make this bulletin possible!


JOHN PATRICK publishing company, inc.
 To place an ad in this bulletin, please contact us at
1.800.333.3166 or visit us at **www.jpcc.net**